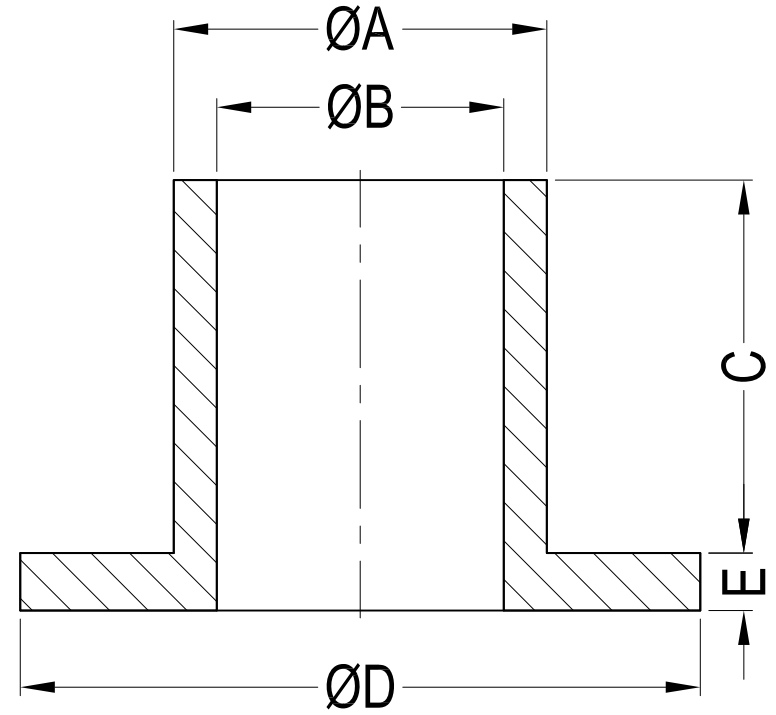


Notes:
RoHS Compliant;



Part No.	Part Name	ØA	ØB	C	ØD	E	Material	Color
43454	GCE2320	3.0	2.3	0.8	4.6	1.2	PA66 UL94 V2	Natural
40976	GCE3644	4.3	3.6	3.2	7.4	1.2	PA66 UL94 V0	
41486	GCE4077	4.7	4.0	6.25	10.84	1.5	PA66 UL94 V2	
42613	GCE4440	5.2	4.4	2.4	8.7	1.6		
42529	GCE5163	6.6	5.1	4.7	10.1			
40035	GCE8210	11.0	8.1	8.0	20.0	2.0		
40036	GCE8215			13.0				
40033	GCE10015	13.0	10.0	23.0	23.7			
40034	GCE10025							
40767	GCE15034	21.0	15.0	30.0	27.0	4.0	Black	
42640	GCE6230	6.5	6.2	2.0	12.0	1.0		
42472	GCE4540	6.0	4.5	3.2	8.0	0.8		PA6+GF UL94 HB
42641	GCE4025	6.3	4.0	1.3	9.3	1.2		PA6 UL94 V2
43437	GCE5163B	6.6	5.1	4.7	10.1	1.6		PA66
43326	GCE10012	13.0	10.0	10.0	23.7	2.0		UL94 V2

						DATE	2015-4-15	DIMENSION		TOLERANCE	
TITLE	ROUND SPACER					SCALE	FIT	L ≤ 4	±0.10		
PART NAME	GCE	MOLD NO.	S0658/884	DRAW	ZHR	UNIT	MM	4 < L ≤ 15	±0.25		
PART NO.	SEE TABLE	MATERIAL	SEE TABLE	DESIGN	ZHR	VERSION	A0	15 < L ≤ 50	±0.30		
DWG NO.	E4201	COLOR	SEE TABLE	APPROVAL	FDL	VIEW		50 < L ≤ 100	±0.40		