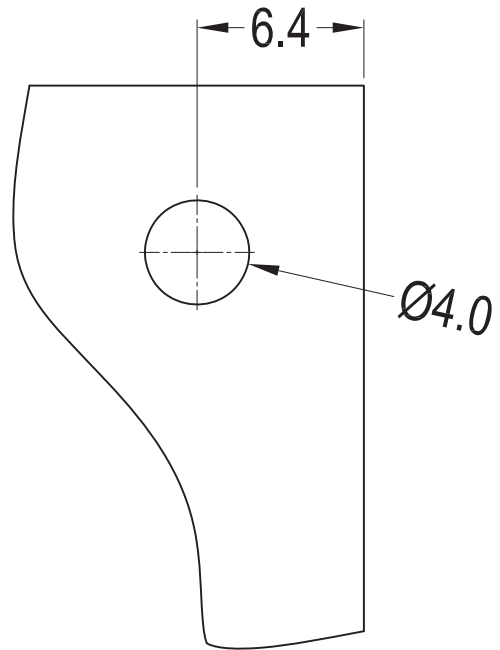
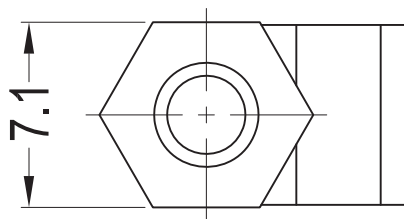


Top Board Hole Location



Notes:

1. Material: PA66 UL94 V2;
2. Color: Natural;
3. RoHS Compliant;



Top Hole: $\text{Ø}4.0 \pm 0.08\text{mm}$, Panel Thickness: 1.57mm;
 Bottom Hole: For Metal #6 (Type B) Self-Tapping Screw

Part No.	Part Name	A	B
42073	GTEHCBS-4-01	6.4	5.2
42069	GTEHCBS-5-01	7.9	
42070	GTEHCBS-6-01	9.5	6.4
42071	GTEHCBS-8-01	12.7	
42072	GTEHCBS-10-01	15.9	
42074	GTEHCBS-12-01	19.1	
42075	GTEHCBS-14-01	22.2	
42078	GTEHCBS-16-01	25.4	

Americom GmbH
<https://americom.de>

americom
 Komponenten die verbinden

DATE 2014-6-2 DIMENSION TOLERANCE

TITLE	EDGE HOLDING SUPPORT					SCALE	FIT	L ≤ 4	±0.10
PART NAME	GTEHCBS	MOLD NO.	S0778	DRAW	JF	UNIT	MM	4 < L ≤ 15	±0.20
PART NO.	SEE TABLE	MATERIAL	SEE NOTES	DESIGN	JF	VERSION	A0	15 < L ≤ 50	±0.30
DWG NO.	E4227	COLOR	SEE NOTES	APPROVAL	FDL	VIEW		50 < L ≤ 100	±0.40