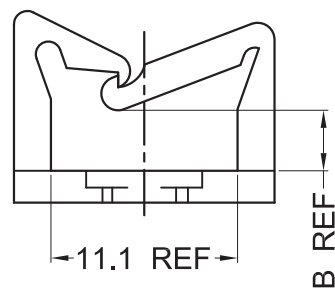


AS MOLDED POSITION

Fig.1



LOCKED POSITION

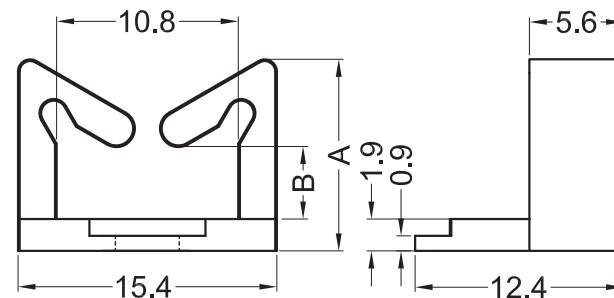
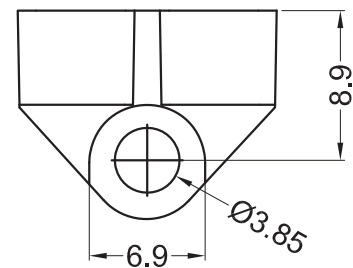
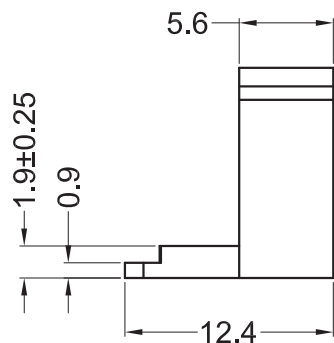


Fig.2

Part No.	Part Name	Part No.	Part Name	A	B	
60837	GLWS-SR-1-01	60849	GLWS-SR-1-19	11.4	3.6	1
60838	GLWS-SR-2-01	60850	GLWS-SR-2-19	16.3	8.6	
60839	GLWS-SR-3-01	60851	GLWS-SR-3-19	25.4	18.3	
60840	GLWS-SR-4-01	60852	GLWS-SR-4-19	33.3	25.4	
60666	GWS-SR-1-01	60999	GWS-SR-1-19	11.4	4.4	2
60667	GWS-SR-2-01	61000	GWS-SR-2-19	16.3	9.3	
60668	GWS-SR-3-01	61001	GWS-SR-3-19	25.4	18.4	
60669	GWS-SR-4-01	61002	GWS-SR-4-19	33.5	26.4	
Material: PA66 UL94 V2			Material: PA66 UL94 V0			

Notes:

- 1.Color:Natural;
- 2.RoHS Compliant;
- 3.Panel mounting hole:Ø3.6-3.7mm.

Americom GmbH https://americom.de						americom Komponenten die verbinden		DATE	2017-12-29	DIMENSION	TOLERANCE
TITLE	WIRE SADDLE - SNAP RIVET MOUNT					SCALE	FIT		L≤4	±0.10	
PART NAME	GLWS & GWS	MOLD NO.	S0759	DRAW	ZHR	UNIT	MM		4 < L ≤ 15	±0.20	
PART NO.	SEE TABLE	MATERIAL	SEE TABLE	DESIGN	ZHR	VERSION	A0		15 < L ≤ 50	±0.30	
DWG NO.	E6210	COLOR	SEE NOTES	APPROVAL	FDL	VIEW			50 < L ≤ 100	±0.40	