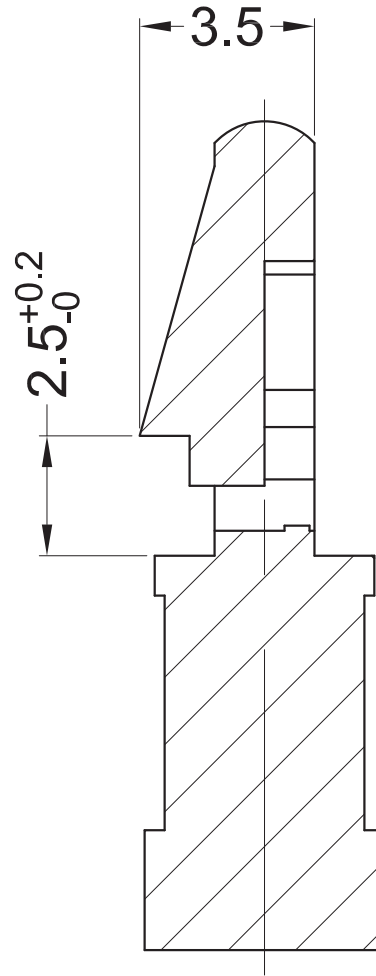


This position doesn't exist once A=3.2mm



Notes:

- 1. RoHS Compliant;
- 2. Hole:  $\text{Ø}3.2 \pm 0.05\text{mm}$ ;
- Panel Thickness: Max. 2.3mm;

Part No.	Article No.	Part No.	Article No.	Part No.	Article No.	Part No.	Article No.	A
43728	GSCBSP-2-66	43737	GSCBSP-2-V0	43746	GSCBSP-2-66B	43755	GSCBSP-2-BV0	3.2
43729	GSCBSP-4-66	43738	GSCBSP-4-V0	43747	GSCBSP-4-66B	43756	GSCBSP-4-BV0	6.4
43730	GSCBSP-5-66	43739	GSCBSP-5-V0	43748	GSCBSP-5-66B	43757	GSCBSP-5-BV0	7.9
43731	GSCBSP-6-66	43740	GSCBSP-6-V0	43749	GSCBSP-6-66B	43758	GSCBSP-6-BV0	9.5
43732	GSCBSP-7-66	43741	GSCBSP-7-V0	43750	GSCBSP-7-66B	43759	GSCBSP-7-BV0	11.1
43733	GSCBSP-8-66	43742	GSCBSP-8-V0	43751	GSCBSP-8-66B	43760	GSCBSP-8-BV0	12.7
43734	GSCBSP-9-66	43743	GSCBSP-9-V0	43752	GSCBSP-9-66B	43761	GSCBSP-9-BV0	14.3
43735	GSCBSP-10-66	43744	GSCBSP-10-V0	43753	GSCBSP-10-66B	43762	GSCBSP-10-BV0	15.9
43736	GSCBSP-12-66	43745	GSCBSP-12-V0	43754	GSCBSP-12-66B	43763	GSCBSP-12-BV0	19.1
Material: PA66 UL94V2 Color: Natural		Material: PA66 UL94V0 Color: Natural		Material: PA66 UL94V2 Color: Black		Material: PA66 UL94V0 Color: Black		

Americom GmbH  
<https://americom.de>



DATE

2021-8-30

DIMENSION

TOLERANCE

TITLE

LOCKING CIRCUIT BOARD SUPPORT

SCALE

FIT

$L \leq 4$

$\pm 0.10$

ARTICLE NO.

GSCBSP

MOLD NO.

S0508

DRAW

JF

UNIT

MM

$4 < L \leq 15$

$\pm 0.20$

PART NO.

SEE TABLE

MATERIAL

SEE TABLE

DESIGN

JF

VERSION

A0

$15 < L \leq 50$

$\pm 0.30$

DWG NO.

E4401

COLOR

SEE TABLE

APPROVAL

FDL

VIEW



$50 < L \leq 100$

$\pm 0.40$